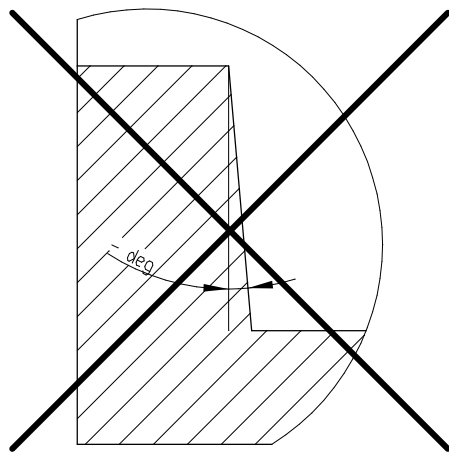
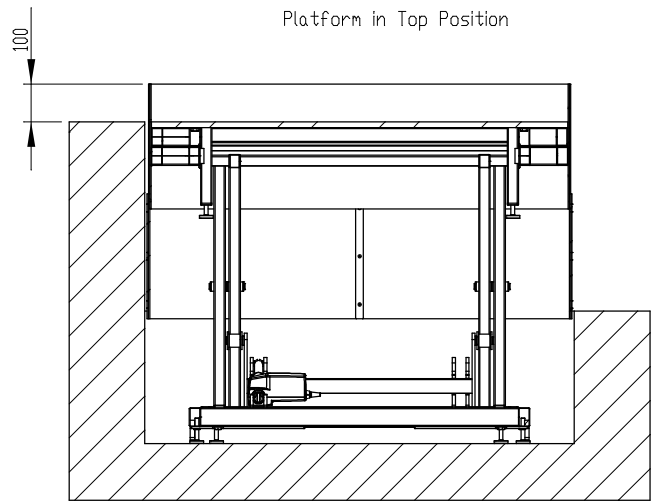


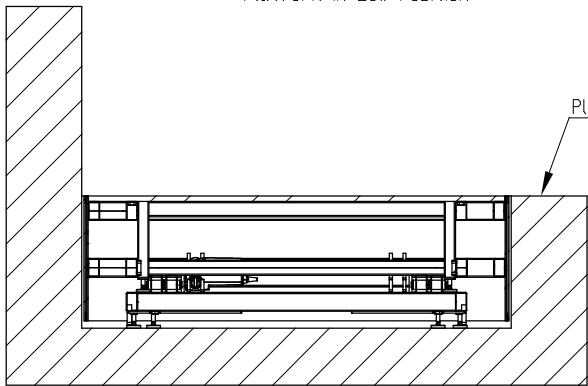
Allowed
Positive draft allowed



Not Allowed
Negative draft

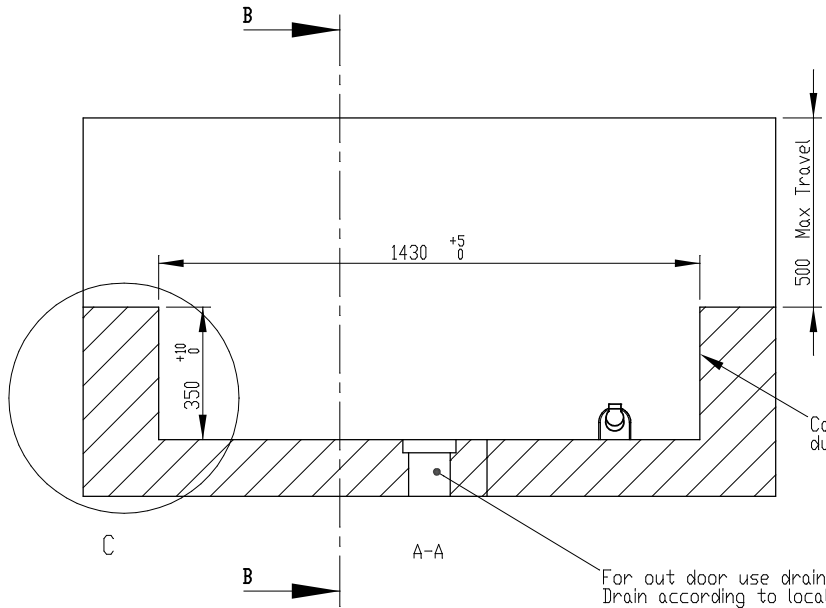


Platform in Top Position



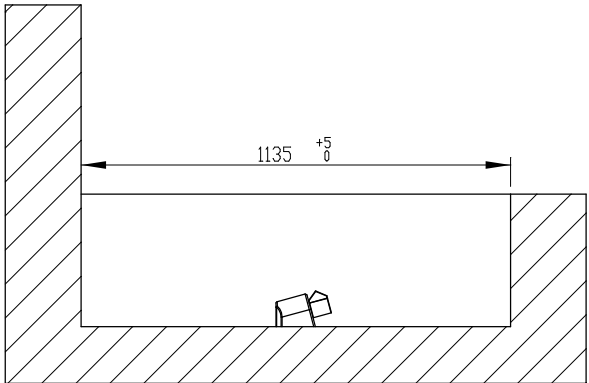
Platform in Low Position

Platform is flush with Ground Level



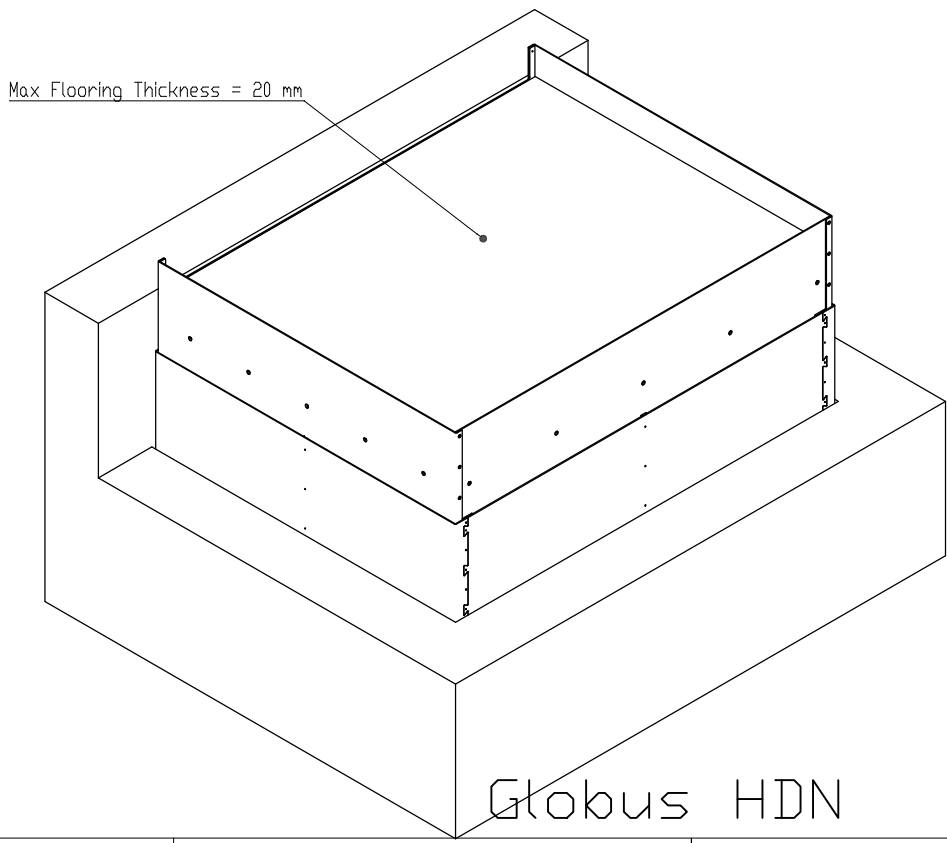
Cables are not allowed on pit walls,
due to tight fit of platform skirt.

For out door use drain is required
Drain according to local legislation

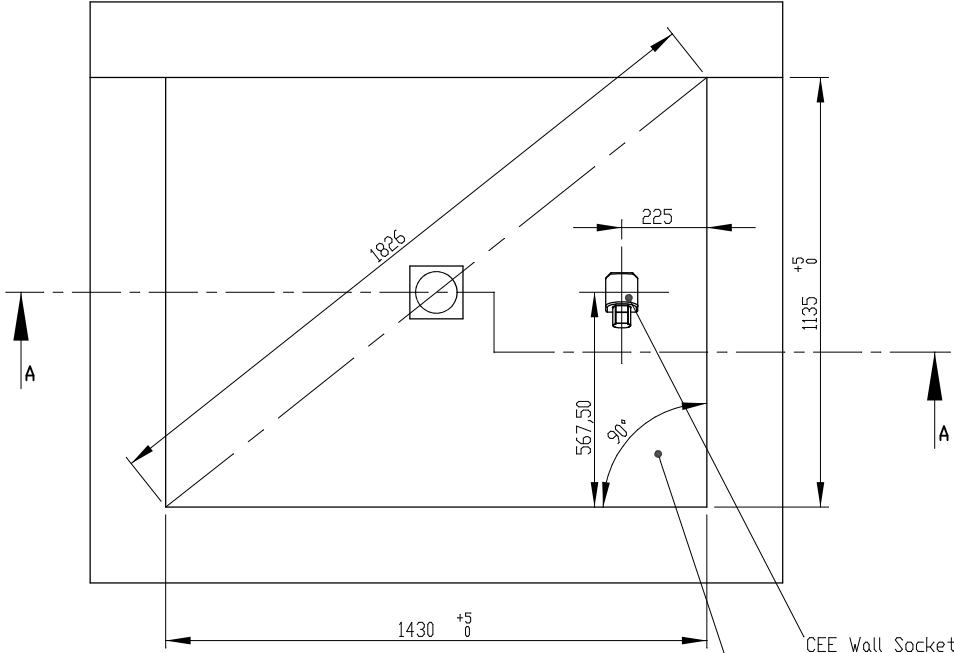


B-B

Platform support points

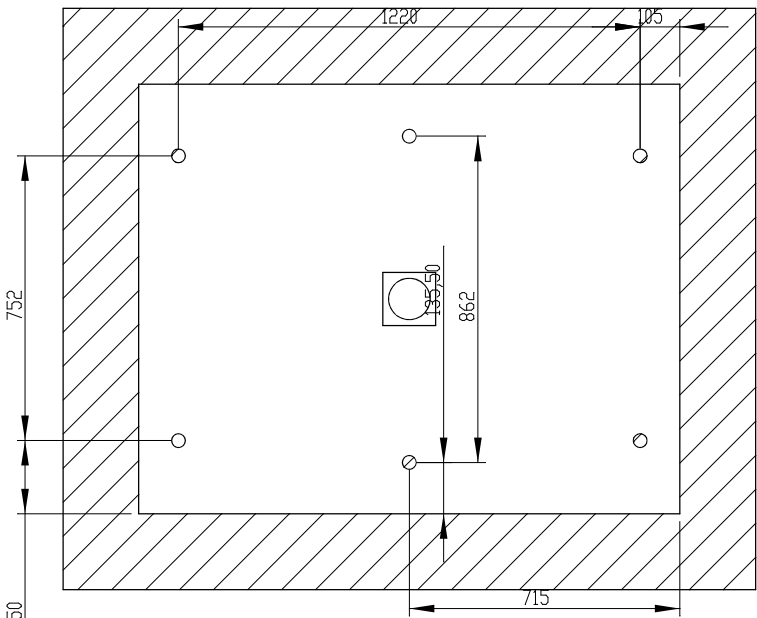


Globus HDN



CEE Wall Socket IP44 (Part no. 102126)
16 Ampere 3 Pole
Power connection 230 VAC 10 A
Position and type is important due to moving parts

All 4 corners



Plattform 1100x1400

Rev.	Revision description	HDN 1100x1400: Long Side Exit, Travel > 200 mm			
G	-	Created date:	Last change date:		Item Number: 102143
F	-		27-02-2013		
E	-	Material:	Tolerances:	Sheet size	Version: B
D	-			A3	
C	-	Finish:	Weight:		Scale: 1:20
B	-				Drawn by: