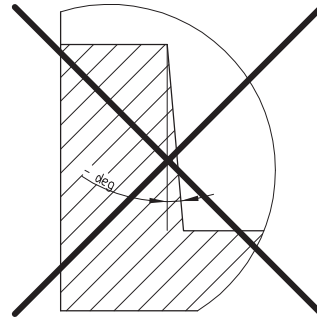
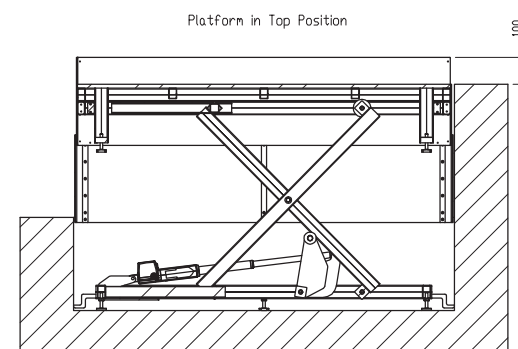


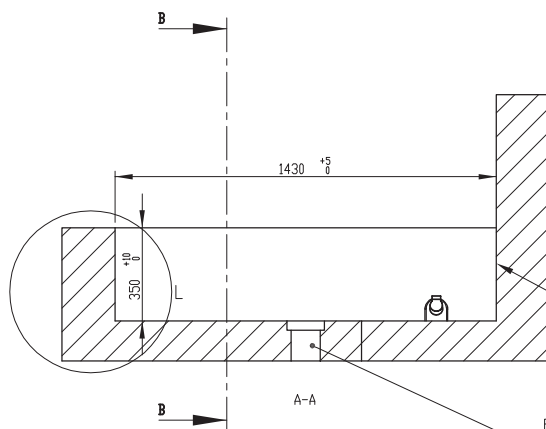
Allowed
Positive draft



Not Allowed
Negative draft

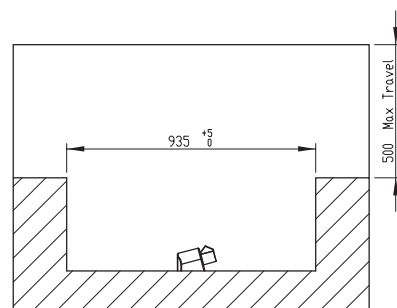


Platform in Top Position



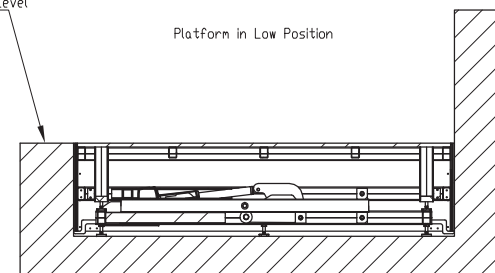
Cables are not allowed on pit walls,
due to tight fit of platform skirt.

For out door use drain is required
Drain according to local legislation



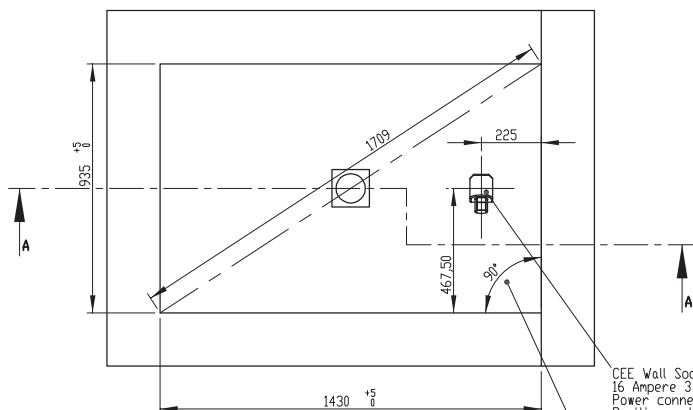
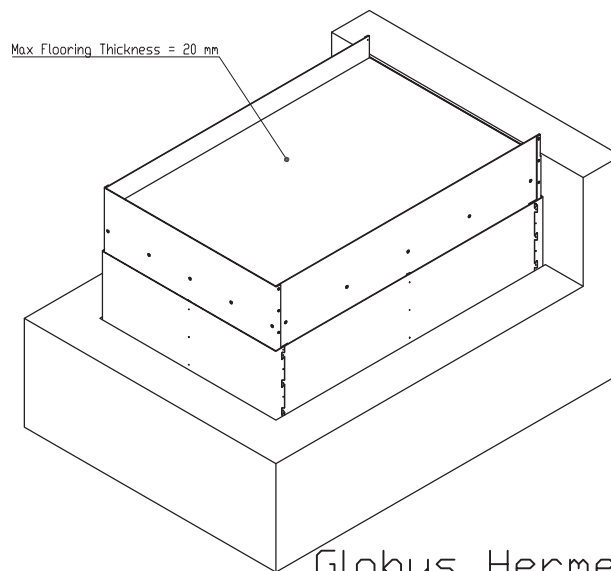
B-B

Platform is flush with Ground Level



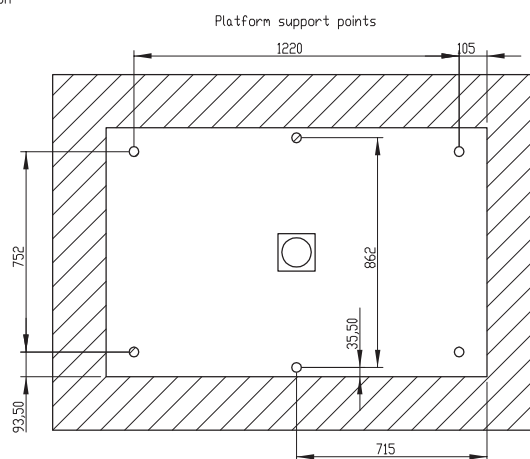
Platform in Low Position

Max Flooring Thickness = 20 mm



CEE Wall Socket IP44 (Part no. 102126)
16 Ampere 3 Pole
Power connection 230 VAC 10 A
Position and type is important due to moving parts

All 4 corners



Platform support points

Plattform 900x1400

Rev.	Revision description	HDN 900x1400: Short Side Exit, Travel > 200 mm			
G	-	Created date:	Last change date:		
F	-		04-01-2013		
E	-	Material:	Tolerance:	Sheet size	Item Number:
D	-			A3	102138
C	-	Finish:	Weight:		Version:
B	-				B
				Scale:	Drawn by:
				1:20	

Globus Hermes