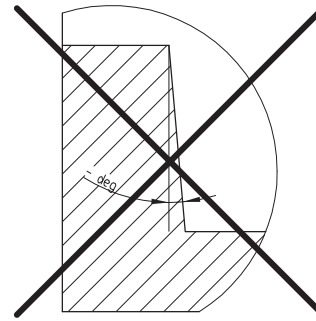
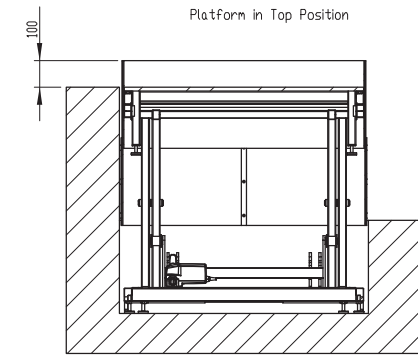


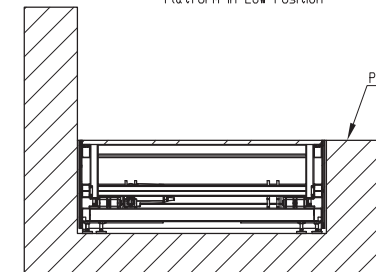
Allowed
Positive draft allowed



Not Allowed
Negative draft

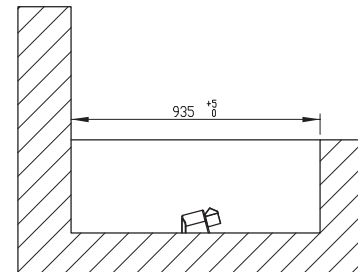
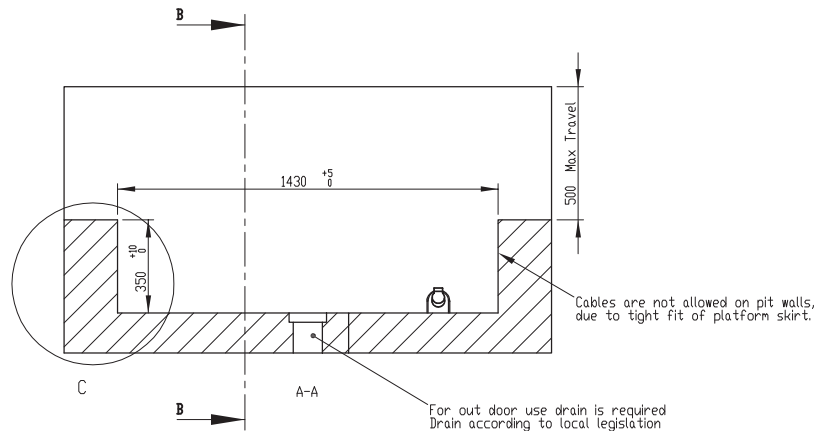


Platform in Top Position



Platform in Low Position

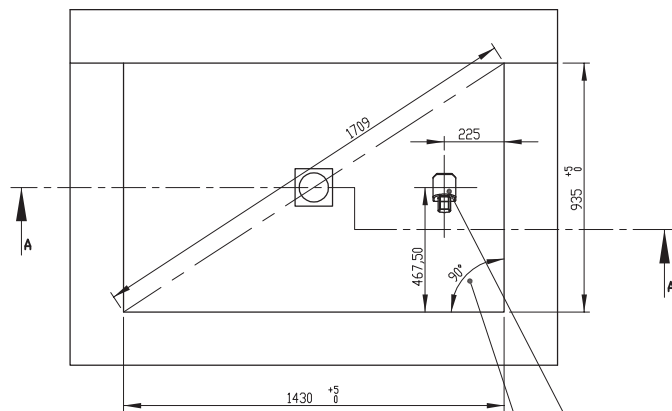
Platform is flush with Ground Level



B-B

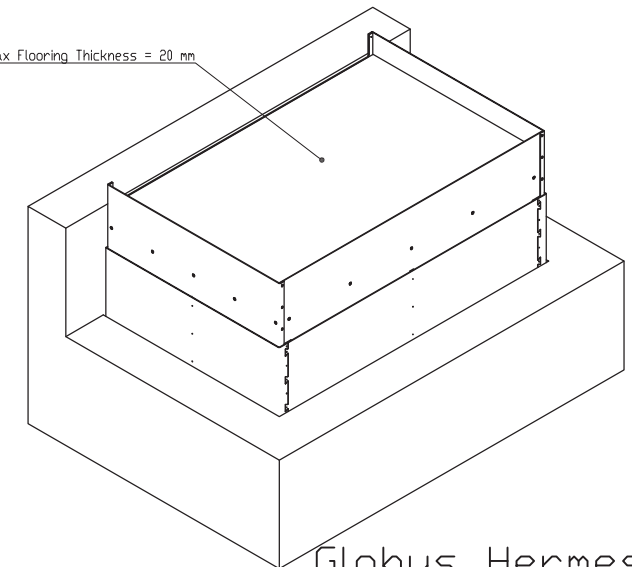
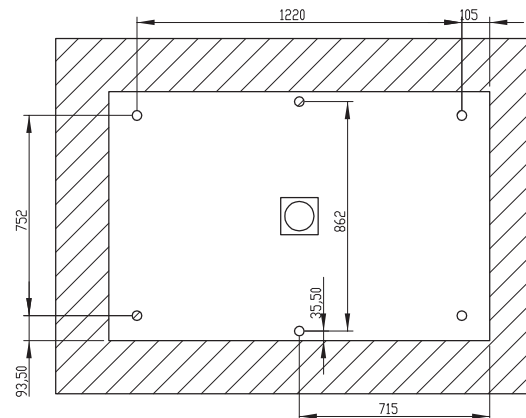
Platform support points

Max Flooring Thickness = 20 mm



CEE Wall Socket IP44 (Part no. 102126)
16 Ampere 3 Pole
Power connection 230 VAC 10 A
Position and type is important due to moving parts

All 4 corners



Globus Hermes

Plattform 900x1400

Rev.	Revision description	HDN 900x1400: Long Side Exit, Travel > 200 mm			
G	-	Created date:	Last change date:		
F	-	04-01-2013		Version:	
E	-	Material:	Tolerance:	Sheet size	Item Number:
D	-	A3		102139	B
C	-	Finish:	Weight:	Scale:	Drawn by:
B	-	1:20			