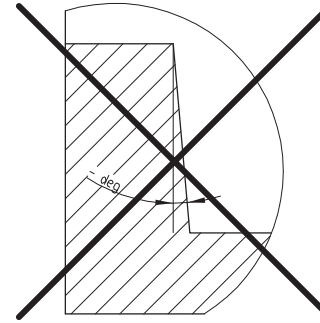
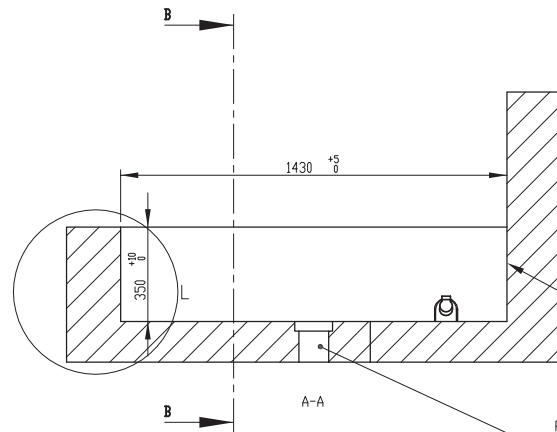
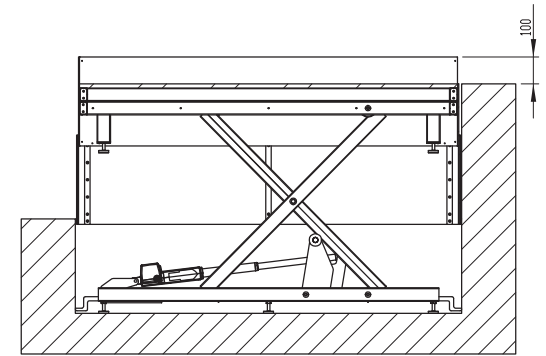


Allowed  
Positive draft

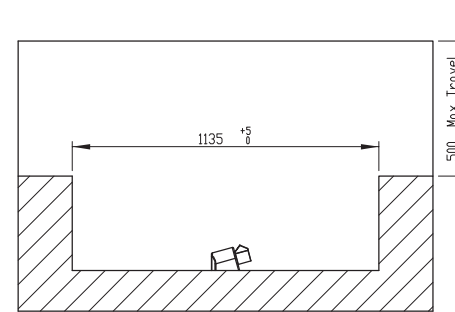


Not Allowed  
Negative draft



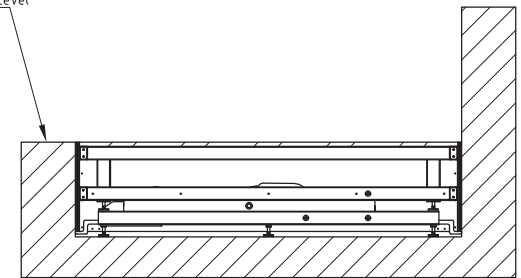
Cables are not allowed on pit walls,  
due to tight fit of platform skirt.

For out door use drain is required  
Drain according to local legislation

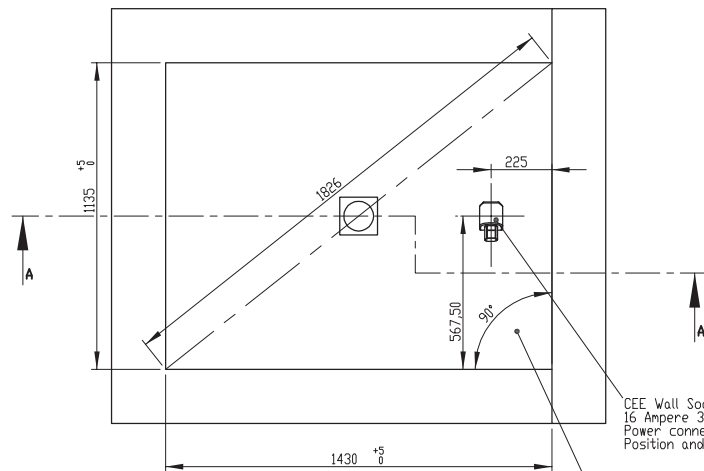
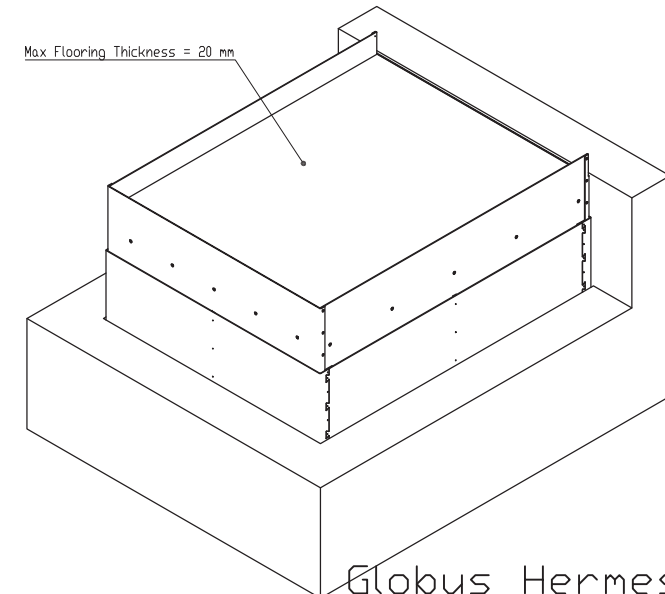


B-B

Platform is flush with Ground Level

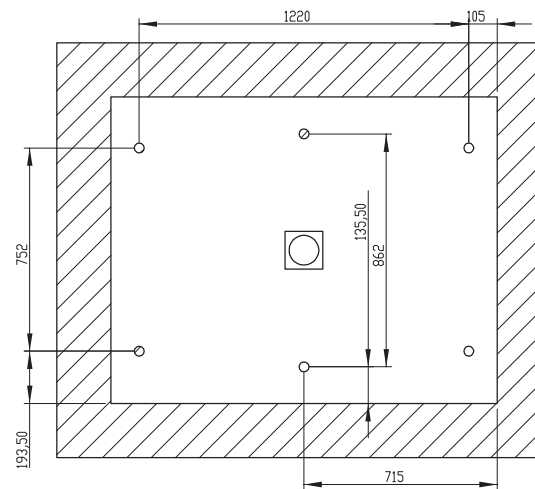


Max Flooring Thickness = 20 mm



CEE Wall Socket IP44 (Part no. 102126)  
16 Ampere 3 Pole  
Power connection 230 VAC 10 A  
Position and type is important due to moving parts

All 4 corners



## Plattform 1100x1400

Globus Hermes

Rev.	Revision description	HDN 1100x1400: Short Side Exit, Travel > 200 mm			
G	-	Created date:	Last change date:		
F	-		27-02-2013		
E	-	Material:	Tolerancer:	Sheet size	Item Number:
D	-			A3	102142
C	-	Finish:	Weight:	Scale: 1:20	Version: B
B	-				Drawn by: