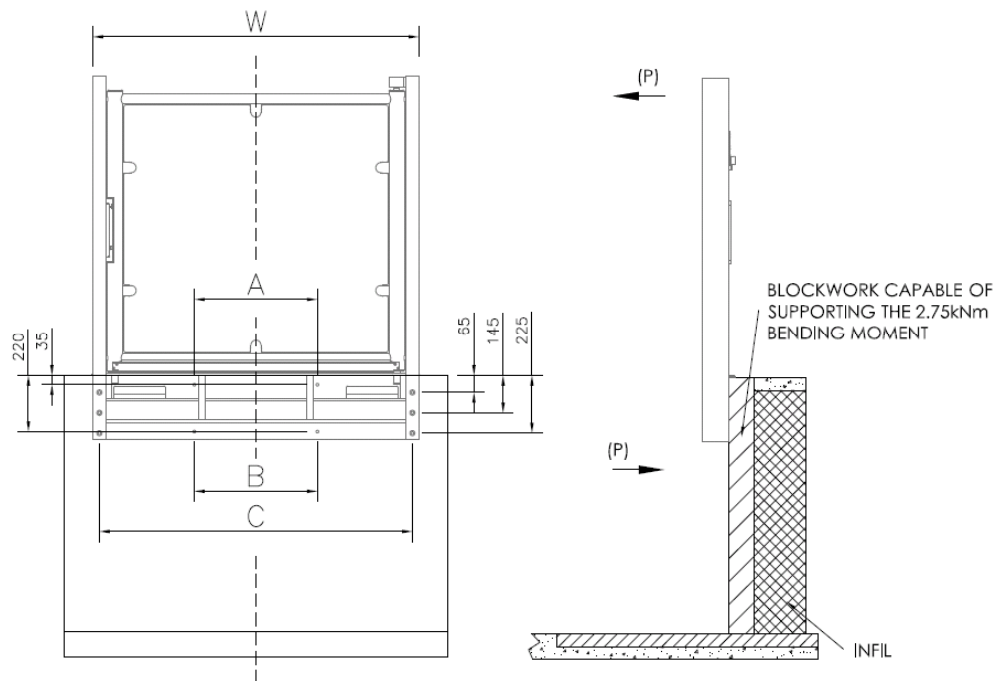


## Övre dörr infästning Globus Sirius EXTRA

2017-10-09

Im Steplift Upper Gate Fixing / Loading Details.



### UPPER GATE FIXING

GATE VARIABLES				
THROUGH ACCESS				Gate Width
LIFT WIDTH	"A"	"B"	"C"	"W"
800W	380mm	380mm	925mm	975mm
900W	380mm	480mm	1025mm	1075mm
1100W	480mm	480mm	1225mm	1275mm
SIDE ACCESS				
1400W	480mm	480mm	1370mm	1422mm

**NOTE:**  
THESE LOADINGS ARE ONLY GENERATED UNDER FORESEEABLE MISUSE.

TOTAL STRUCTURAL LOAD (FOS 1.6) = 240kg.

PULL OUT LOAD PER FIXING = 2kN

BENDING MOMENT ON LIFT FACE WALL = 2.75kN

FIXING DETAILS:  
10~ M10x80 SLEEVE ANCHOR (CONCRETE)  
10~ M10x70 COACH SCREW (WOOD)